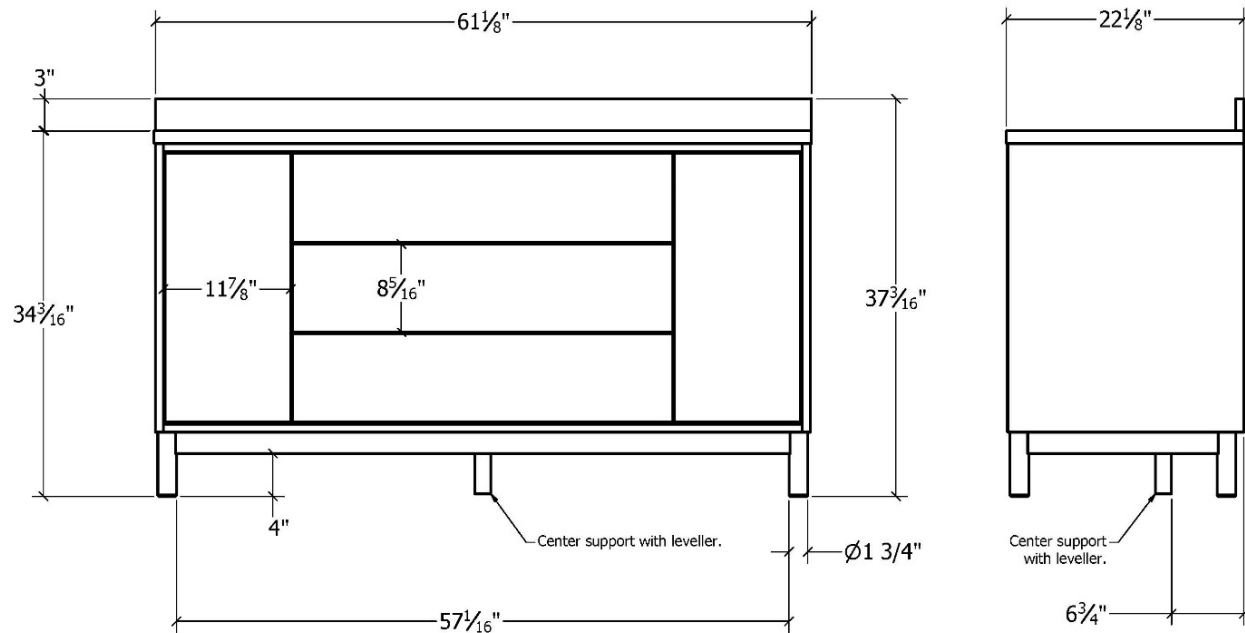
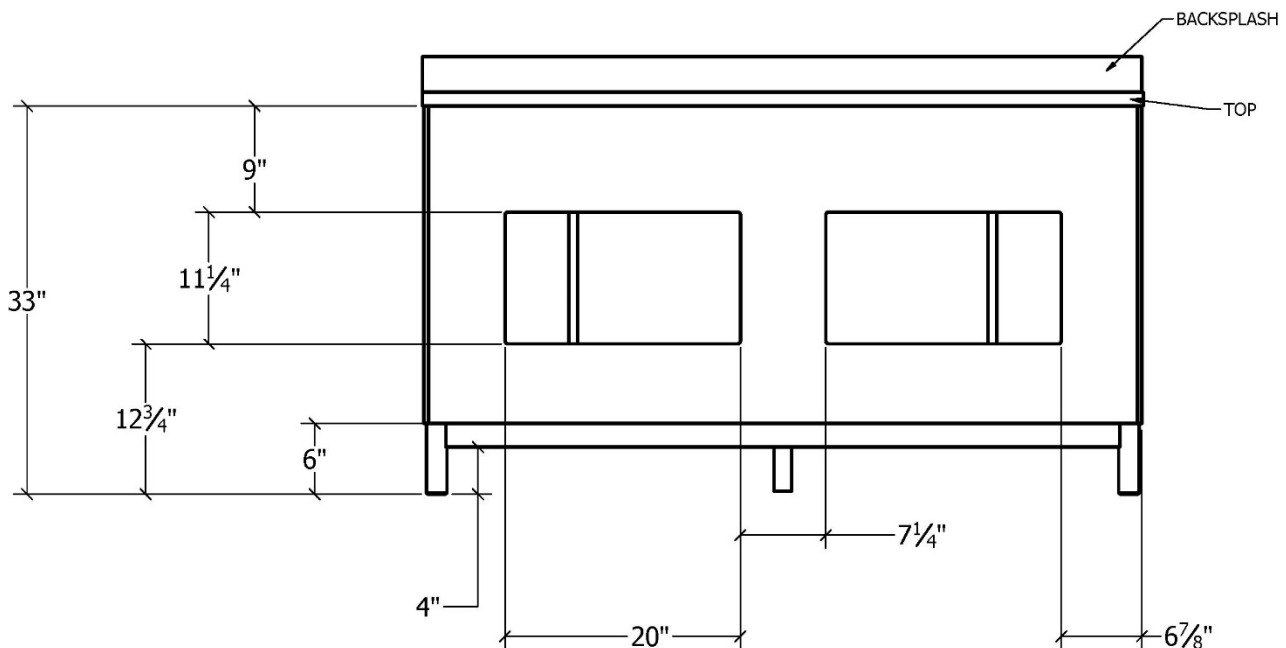


### DIMENSIONS



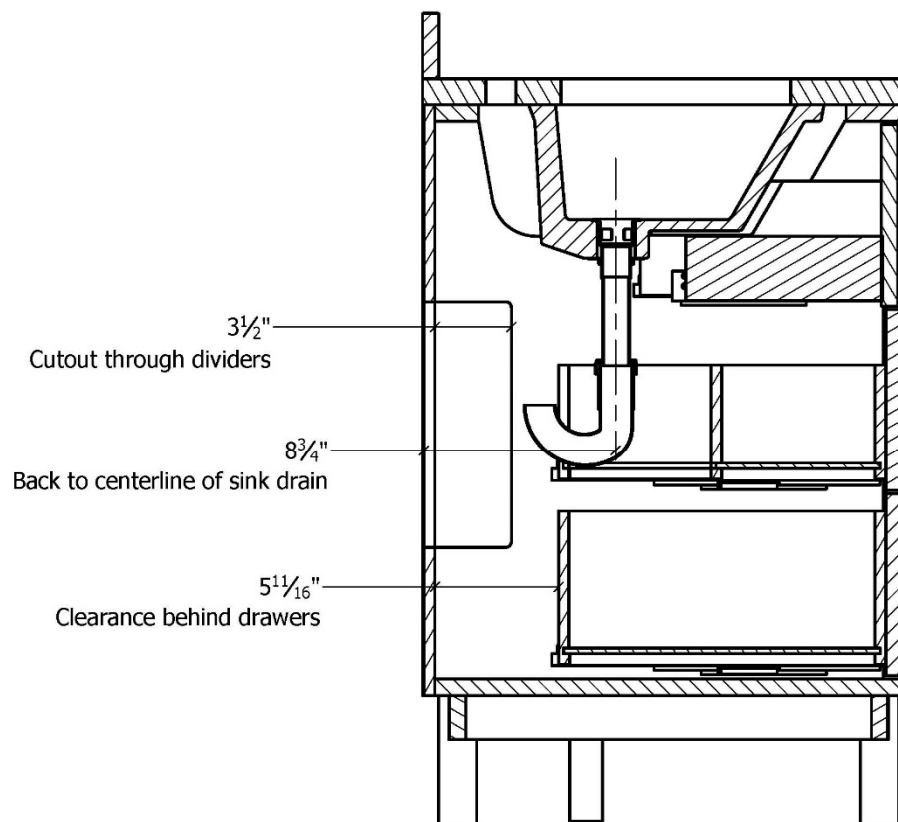
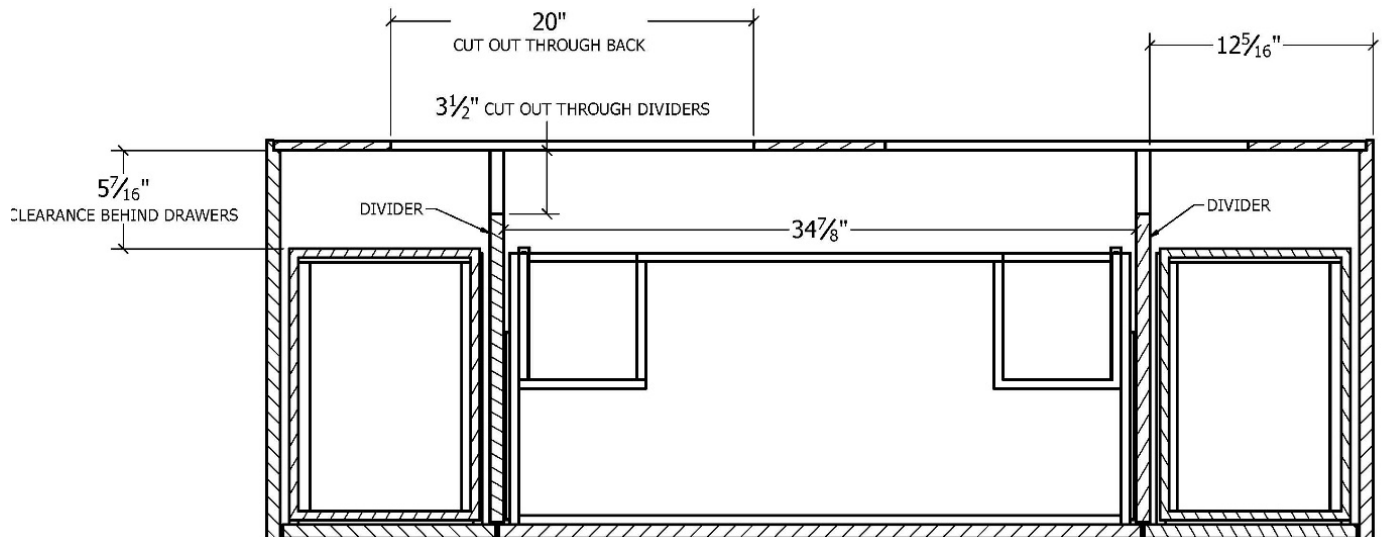
### BACK PLUMBING ACCESS CUTOUTS

Back is  $\frac{3}{4}"$  thick plywood

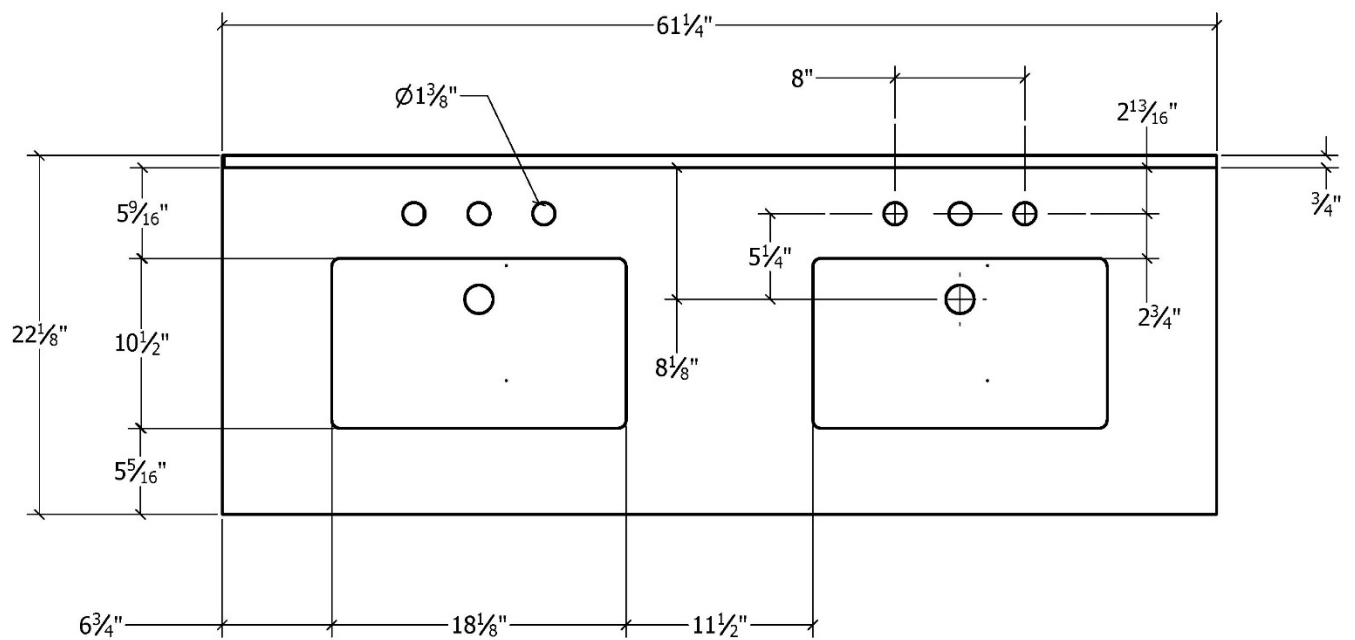


### CONNECT FAUCETS AND PLUMBING

Keep these clearances in mind when routing plumbing so drawer movement will not be restricted



### MARBLE TOP - SINK AND FAUCET CUTOUTS

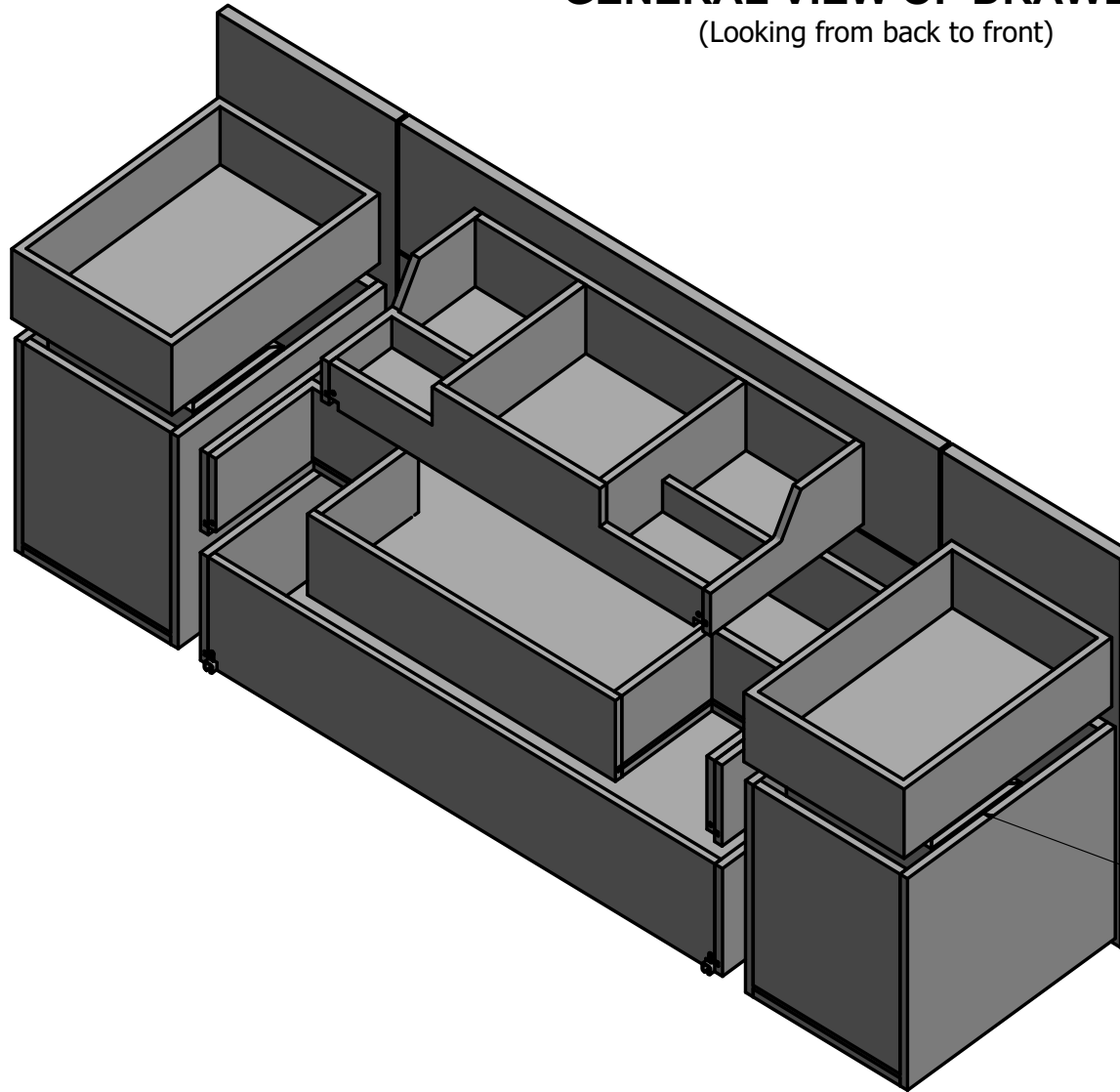


# REJUVENATION

## WARRENTON SINGLE VANITY

### GENERAL VIEW OF DRAWERS

(Looking from back to front)

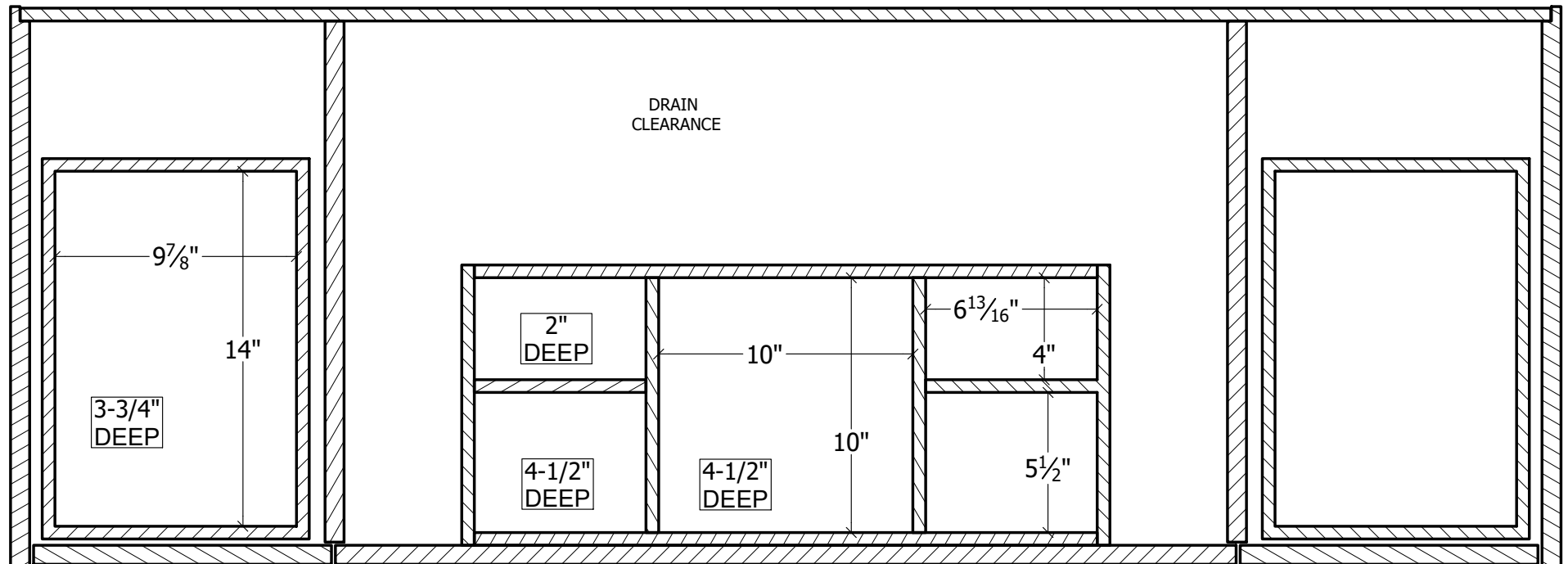
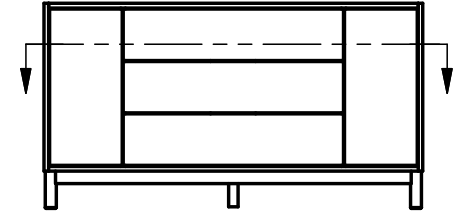


SLIDING TRAY  
SITS IN TOP OF  
BOTTOM DRAWER

# REJUVENATION

## WARRENTON SINGLE VANITY

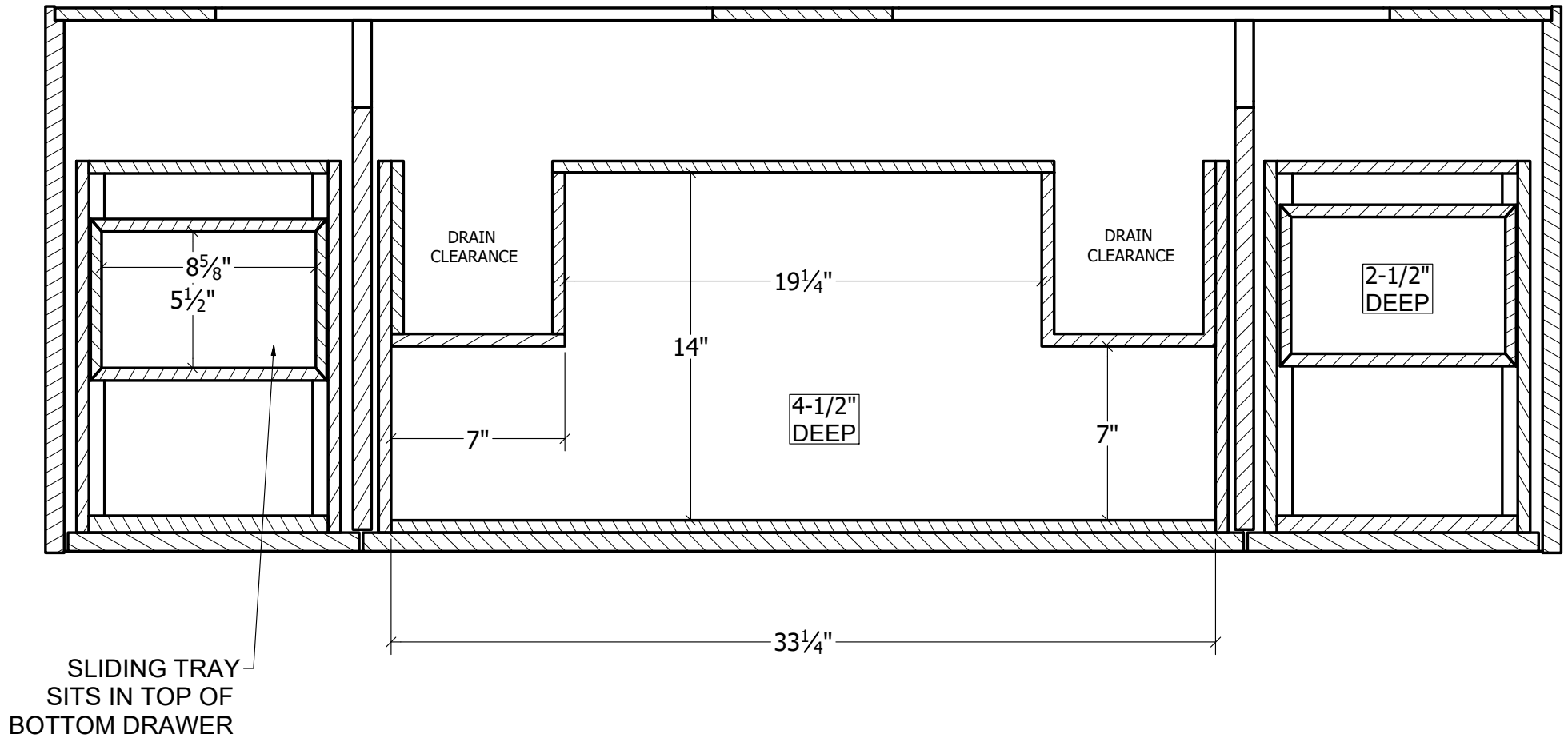
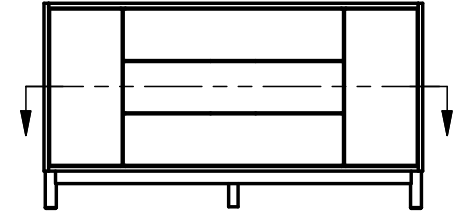
### SECTION VIEW - TOP DRAWER



# REJUVENATION

## WARRENTON SINGLE VANITY

### SECTION VIEW - MIDDLE DRAWER



# REJUVENATION

## WARRENTON SINGLE VANITY

SECTION VIEW - BOTTOM DRAWER

